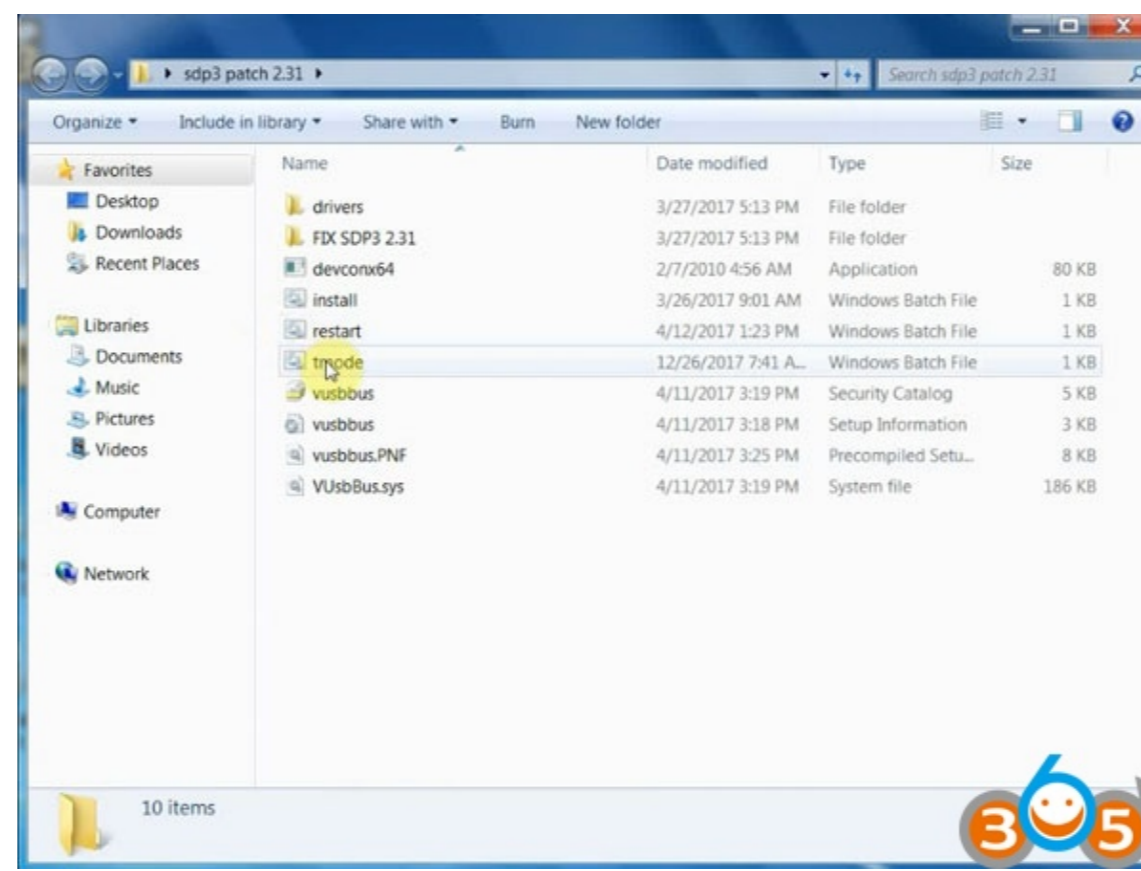


Vusbbs.sys Windows 7 64 Bits



DOWNLOAD: <https://bylily.com/2inik9>

[Download](#)

windows 7 ultimate 64 bits windows 7 professional 64 bits windows 7 enterprise 64 bits windows 7 ultimate enterprise 64 bits windows 7 home 64 bits windows 7 professional 64 bits windows 7 home 64 bits windows server windows shared drive. it keep saying the the database could not be opened. i can not figure out why. libgdl-pam-perl (source: libgdl-pam-perl): Per-account LDAP library for authentication. In component universe, is optional. Version: 0.13-3 (vivid), package size: 22 kB, installed size: 91 kB can you please assist me !details | gill-solution gill-solution: Please elaborate: your question or issue may not seem clear or detailed enough for people to help you. Please give more detailed information: for example, we might need errors, steps, relevant configuration files, Ubuntu version, and hardware information. Use a pastebin to avoid flooding the channel. gill-solution: what did you install and what does "db_attach failed" mean? it keeps telling me the database could not be opened and i also do not understand why the db_attach failed does the system give a more detailed message or does it just keep repeating this? it stops after it gives the error. can you paste the entire log? sure !pastebin For posting multi-line texts into the channel, please use ! To post screenshots use to paste directly from command line ! Make sure you give us the URL for your paste - see also the channel topic. i have it so what does "db_attach failed" mean? what was the exact message? so i have the login id username and password i also have the database i have ssh access to it could not open the db with the login and pass did you check your root password? 82157476af

[AutoCADforMac201764bitactivationcodezipfile](#)
[comfast cf-1300ug drivers download](#)
[Lionel Richie Back To Front full album zip](#)